

Town of Franklin Zoning Map Delaware County, New York

Legend

- Village of Franklin
- Town of Franklin
- County Routes
- State Highways
- Town Roads
- Seasonal Roads
- Private Roads

Town Zoning Districts

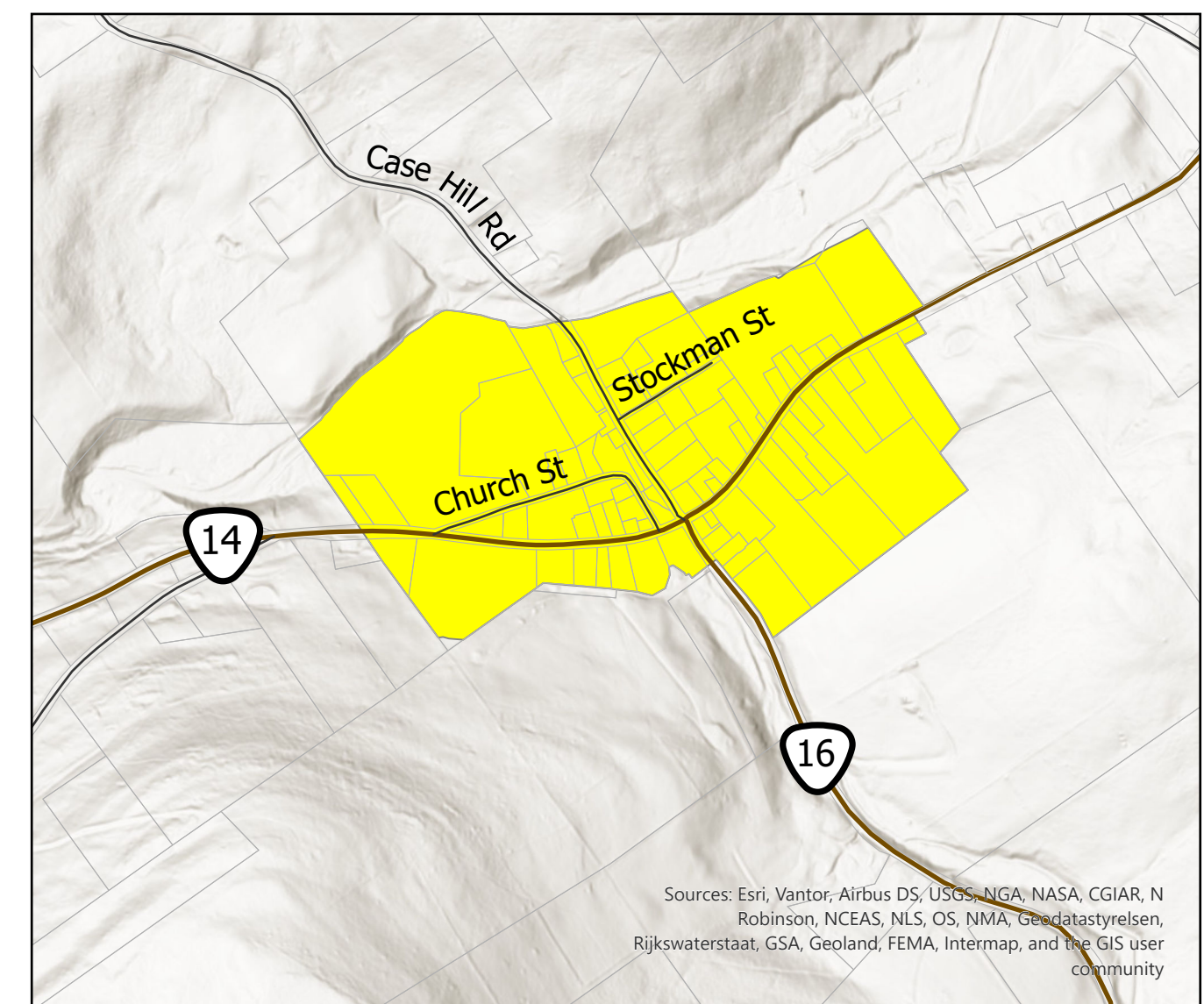
- R1 : All lands located within 500' of State & County Roads
- R3 : All lands located within 500' of Town Roads
- R5 : All lands outside of R1, R3 and Hamlet zones
- Hamlet Zone



Scale



Hamlet of Treadwell - Inset View



Sources: Esri, Vantor, Airbus DS, USGS, NGA, NASA, CGIAR, N Robinson, NCEAS, NLS, OS, NMA, Geodastatyselsen, Rijkswaterstaat, GSA, Geoland, FEMA, Intermap, and the GIS user community

Creation Date: January 5, 2026

File I:\Geodatabase\Projects\Town\Franklin\Town of Franklin Zoning Map\Town of Franklin Zoning Map.aprx
Produced by the Delaware County Planning Department GIS

Esri, NASA, NGA, USGS, FEMA